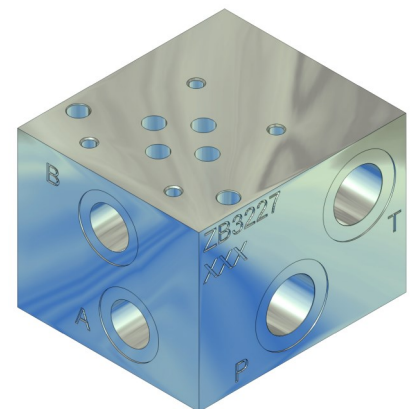
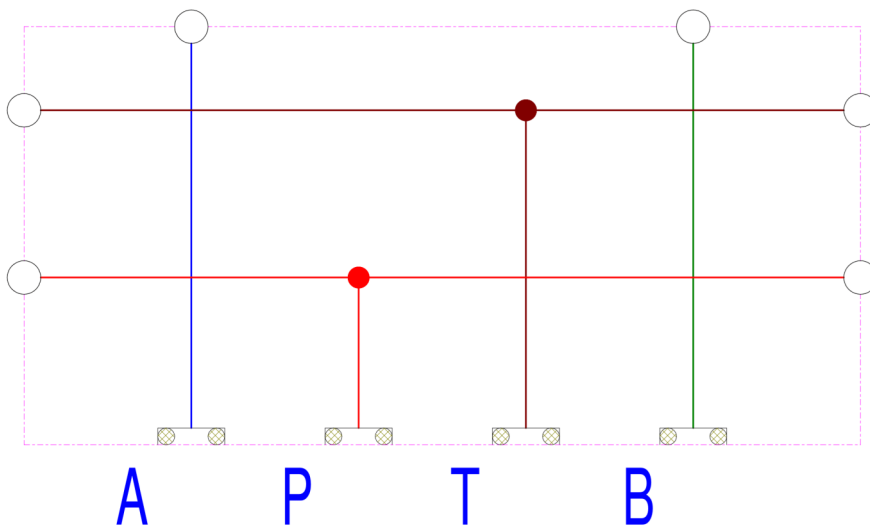
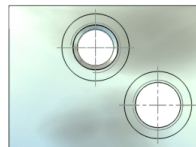
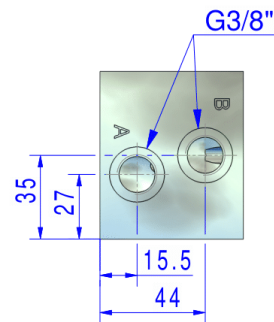
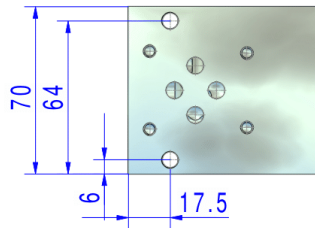
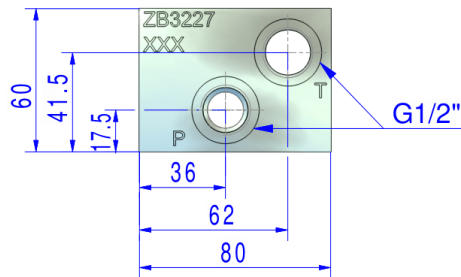
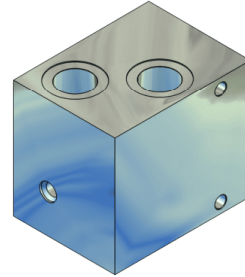
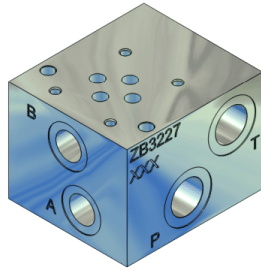


Funktion	Als Verrohrungsgehäuse mit P und T Durchgang
Anschlüsse	P,T je 2x in G 1/2" A,B in G 3/8" seitlich
Werkstoff	11 SMn 30+C
Lochbild	NG-06
Beschichtung	DIN 50961-Fe/Zn 8 B (Blau)
Bestückung	Nach Kundenwunsch
Stat. Warennummer	84812010
Ursprungsland	Deutschland





2 Durchgangsbohrungen Ø6,5