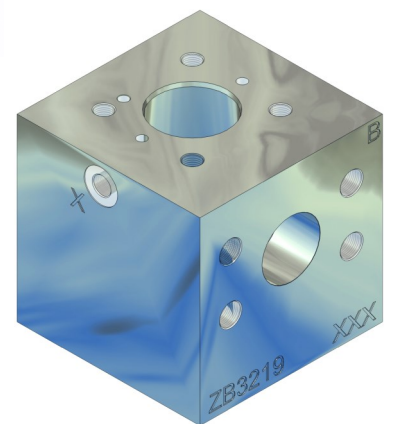
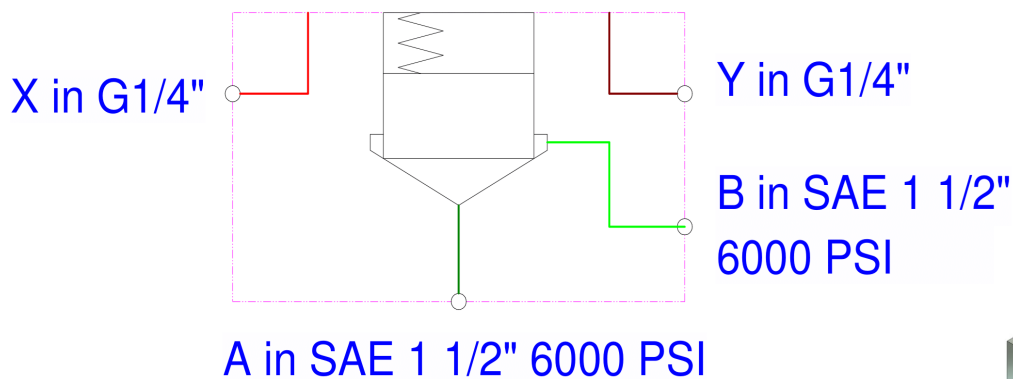
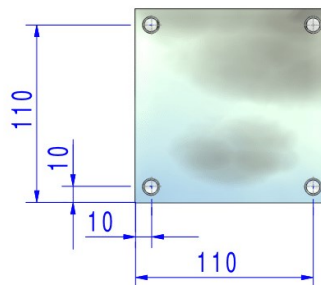
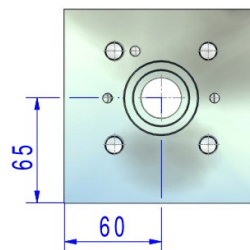
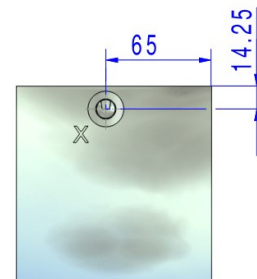
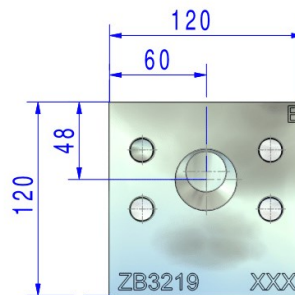
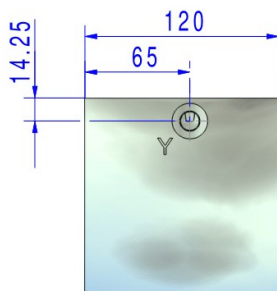
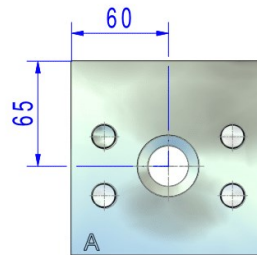
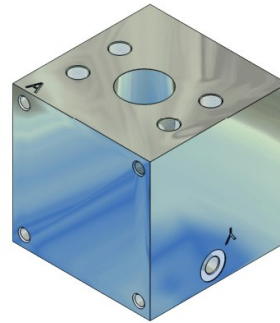
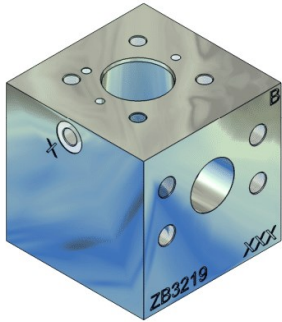


Funktion	Für 2-Wege-Einbauventil
Anschlüsse	A,B in SAE 1½"-6000PSI X,Y in G¼"
Werkstoff	11 SMn 30+C
Druck	420 bar
Durchfluss	450 l/min
Lochbild	NG-25 DIN Cartridge
Beschichtung	Keine Beschichtung
Bestückung	Nach Kundenwunsch
Stat. Warennummer	84812010
Ursprungsland	Deutschland
Anmerkung	Auch für andere Größen





A, B = SAE 1 1/2"6000 PSI  
X, Y = G1/4"

4x Befestigung M10